

# Thermal Print Heads For Barcode and Label Printers

## BWP6511FS

### FEATURES

- Toughness head with a highly durable electrode material
- High-speed type with five-stage LATCH heat history control [FS type]
- New-BP protective layer with excellent abrasion resistance is used.

### APPLICATIONS

- Barcode and label printers
- Bank ATMs
- Amusements
- Ticket-vending machines
- POS terminals

### PRODUCT SPECIFICATIONS

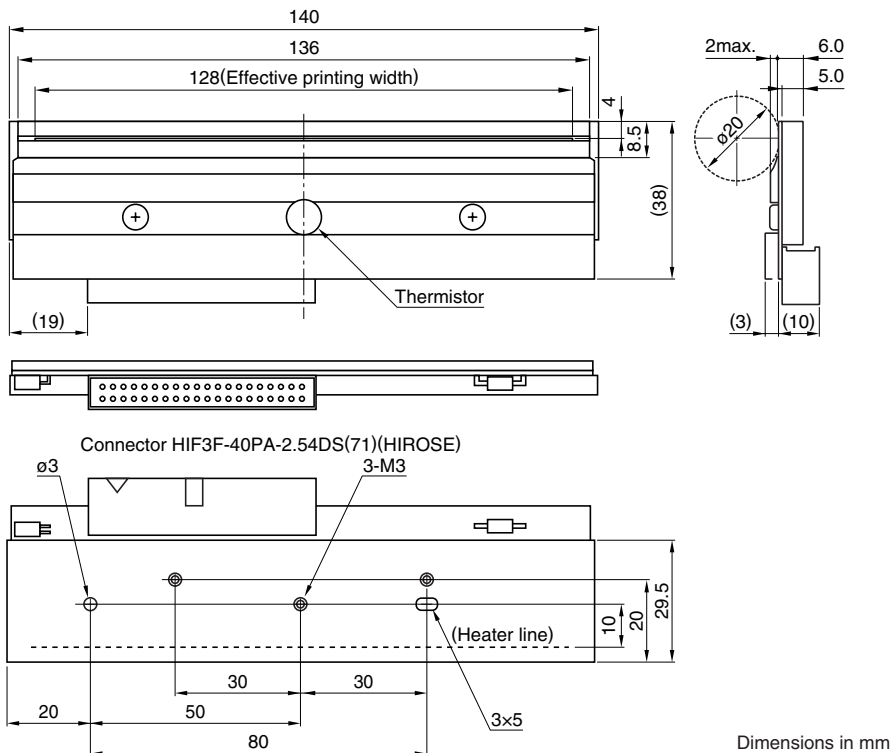
#### HEATING ELEMENT SPECIFICATIONS

Number of heating elements	(dots)	1536
Dot density	(dots/mm)	12
	(DPI)	305
Length of heating element array (effective)	(mm)	128
Heating element average resistance	( $\Omega$ )	1300
Glaze type		Partial glaze

#### DRIVE CONDITIONS

Applied platen diameter	(mm)	$\phi 20$ max.
Paper-feed speed	(mm/sec)	200max.
Data transfer frequency	(MHz)	8max.
Driver power supply	(V)	4.5 to 5.5

### SHAPES AND DIMENSIONS



• All specifications are subject to change without notice.