

Common Mode Choke Coils

For power line

LH series

Type: LH26
 LH30
 LH34

Issue date: September 2011

- All specifications are subject to change without notice.
 - Conformity to RoHS Directive: This means that, in conformity with EU Directive 2002/95/EC, lead, cadmium, mercury, hexavalent chromium, and specific bromine-based flame retardants, PBB and PBDE, have not been used, except for exempted applications.
-

Common Mode Choke Coils For Power Line

Conformity to RoHS Directive

LH Series LH26, LH30, LH34

FEATURES

- A low height (15 to 19mm in height) is achieved.
- Large inductance is achieved in a low region.
- Lightening about 6% is achieved compared with the TF series.

APPLICATIONS

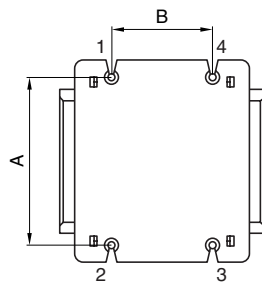
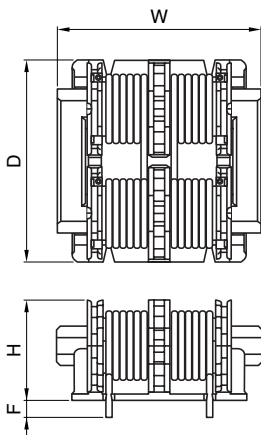
AV equipment, digital consumer electronics

PRODUCT IDENTIFICATION

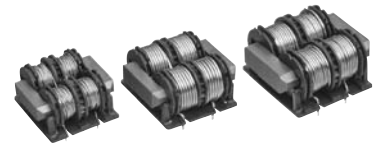
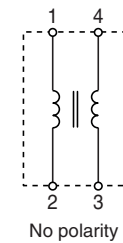
LH30	792Y	3R0	□□
(1)	(2)	(3)	(4)

- (1) Series name
- (2) Inductance value
- (3) Rated current value
- (4) Product management number

SHAPES AND DIMENSIONS



CIRCUIT DIAGRAM



Dimensions in mm

Type	W max.	D max.	H max.	A	B	F
LH26	27.0	27.5	15.0	(20.0)	(11.0)	4.0±1.0
LH30	31.0	31.0	17.0	(24.0)	(11.0)	4.0±1.0
LH34	36.0	36.0	19.0	(28.0)	(11.0)	4.0±1.0

ELECTRICAL CHARACTERISTICS

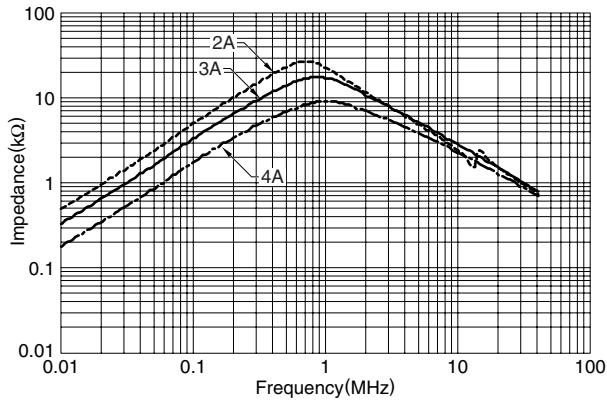
Part No.	Inductance(mH) [at 100kHz]		DC resistance (mΩ)		Rated current Iac(A)max.	ød (mm)
	typ.	min.	max.	typ.		
LH26-592Y2R0-01	7.9	5.9	135	110.0	2	0.50
LH26-402Y3R0-01	5.3	4.0	70	58.0	3	0.65
LH26-212Y4R0-01	2.8	2.1	40	33.0	4	0.75
LH30-792Y3R0-01	10.5	7.9	95	80.0	3	0.70
LH30-562Y4R0-01	7.4	5.6	55	45.0	4	0.85
LH30-412Y5R0-01	5.4	4.1	45	35.3	5	0.90
LH34-123Y3R0-01	16.0	12.0	105	86.5	3	0.75
LH34-752Y4R0-01	10.0	7.5	55	45.2	4	0.90
LH34-562Y5R0-02	7.4	5.6	45	34.7	5	1.00

• All specifications are subject to change without notice.

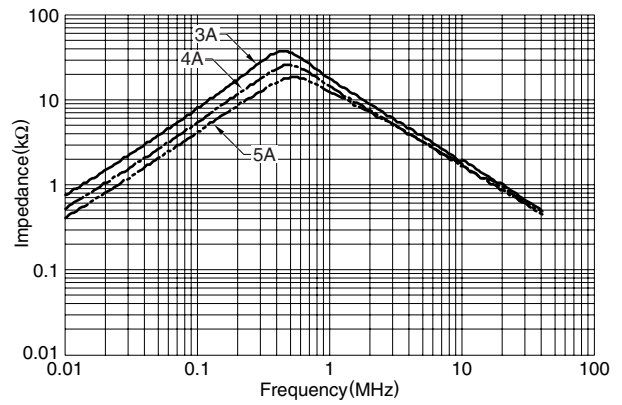
TYPICAL ELECTRICAL CHARACTERISTICS

IMPEDANCE vs. FREQUENCY CHARACTERISTICS(REFERENCE)

LH26 TYPE



LH30 TYPE



LH34 TYPE

