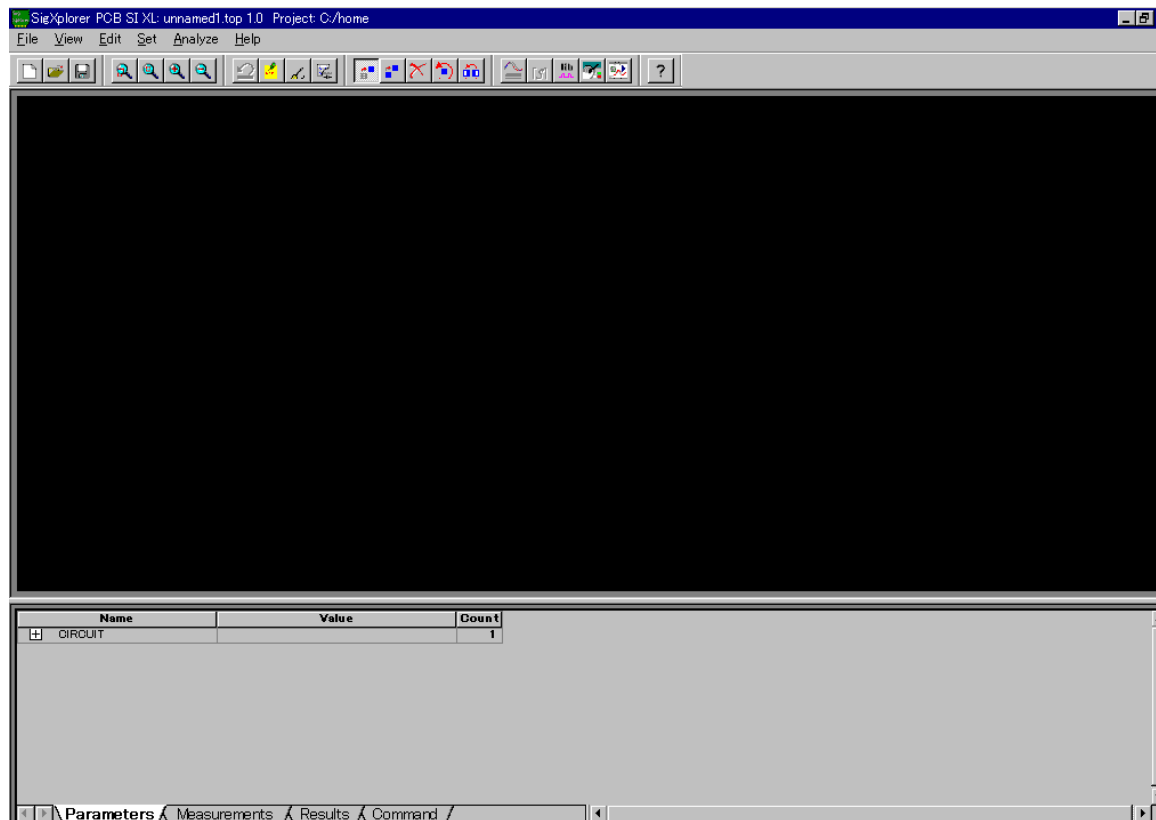


Using the electronic part model for Cadence Allegro PCB SI



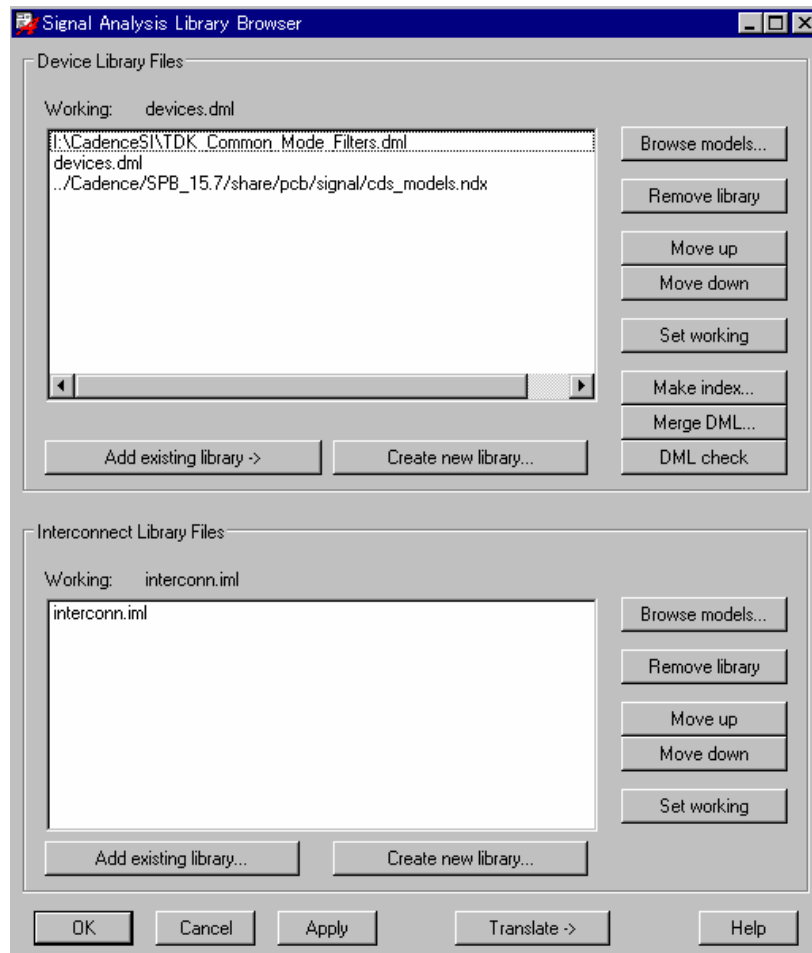
Launching SigExplorer

- Launch SigExplorer



Registering a library: 1

Run "Analyze-Library" from the menu.



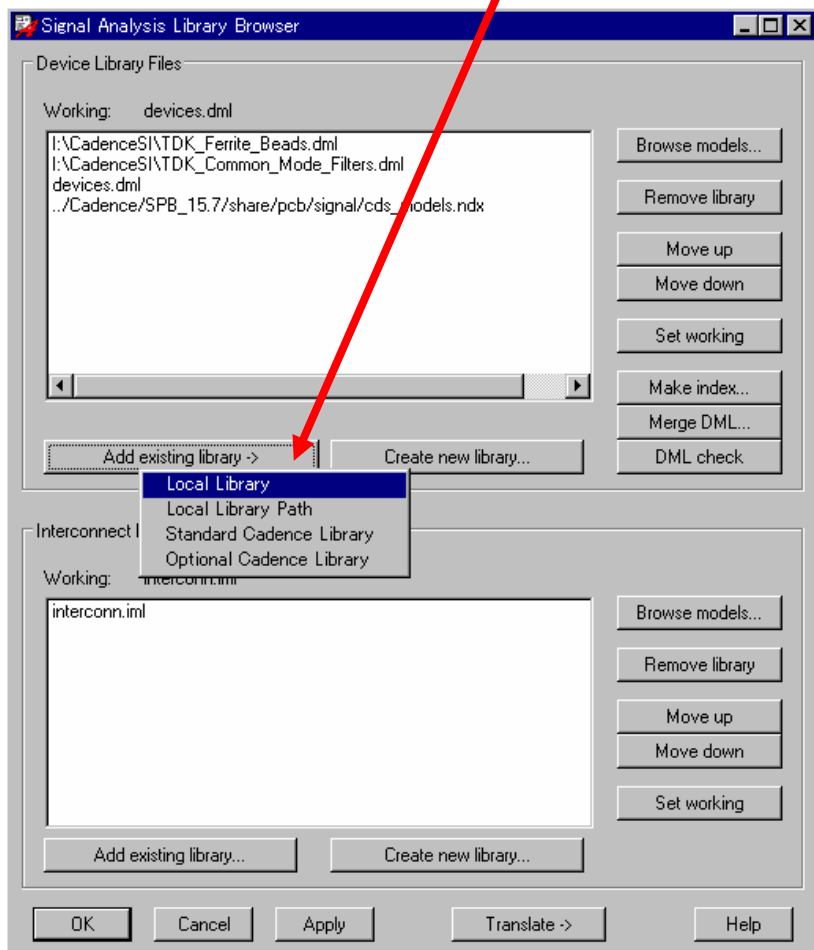
The library browser launches.



Registering a library: 2

Press the "Add existing library" button and select a local library.

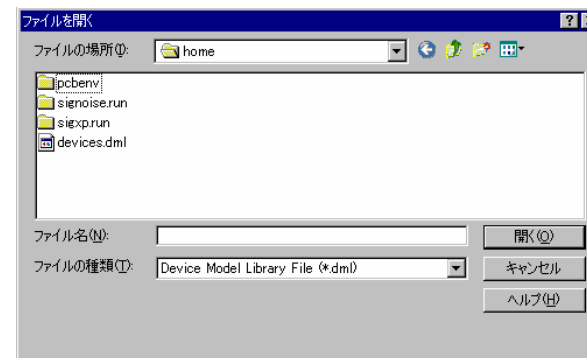
The "Add existing library" button



In the file browsing window, select the dml file that you downloaded.



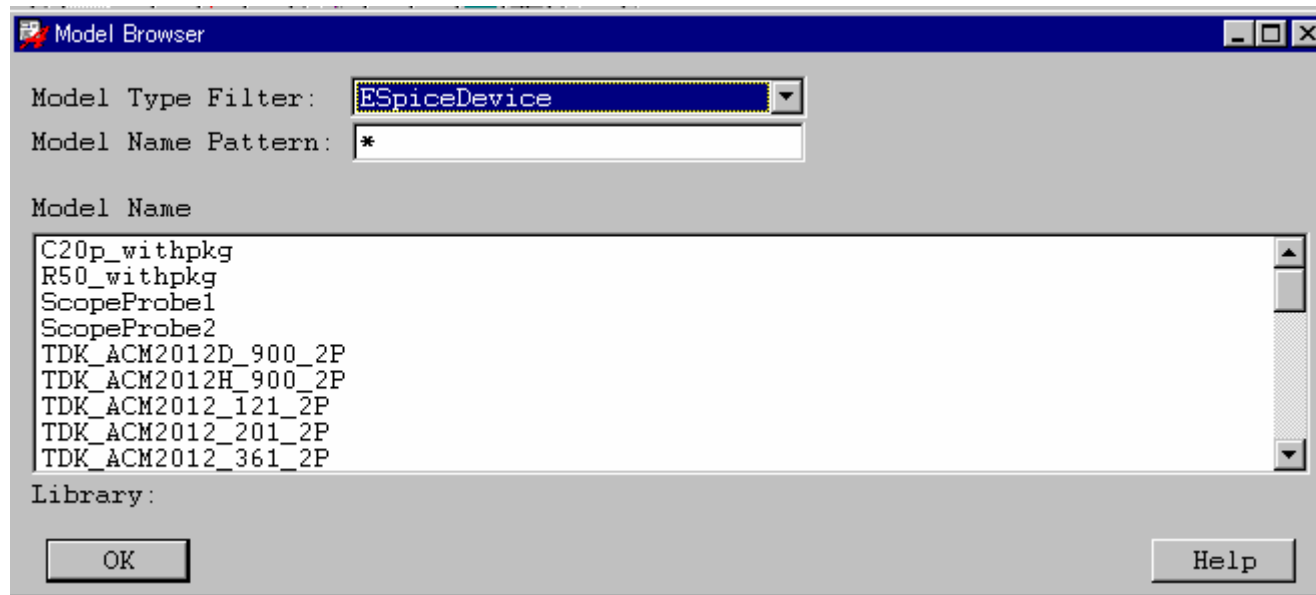
You have now registered the library.



File browsing window

Using the equivalence model: 1

- Run Edit-Add parts.
- Launch the Model Browser.
- TDK electronic parts are registered as "Espice Device."



Using the equivalence model: 2

- Select the desired part and drop it onto the circuit.
- You can run a simulation to verify the part's characteristics.

