

How to use the Allegro PCB PI option's capacitor models



Procedure for registering library 1

1. Decompress the downloaded file and a TDK directory will be generated. Place the directory in the desired location.
2. Start up the Allegro PCB PI option.
3. Select Setup-User Preferences from the menu (Figure 1).
4. The User Preferences Editor will be activated (Figure 2).

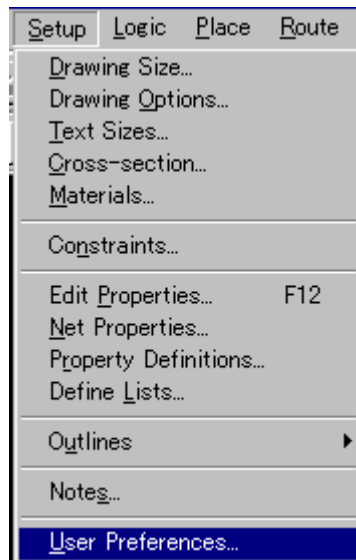


Figure 1 Menu selection window

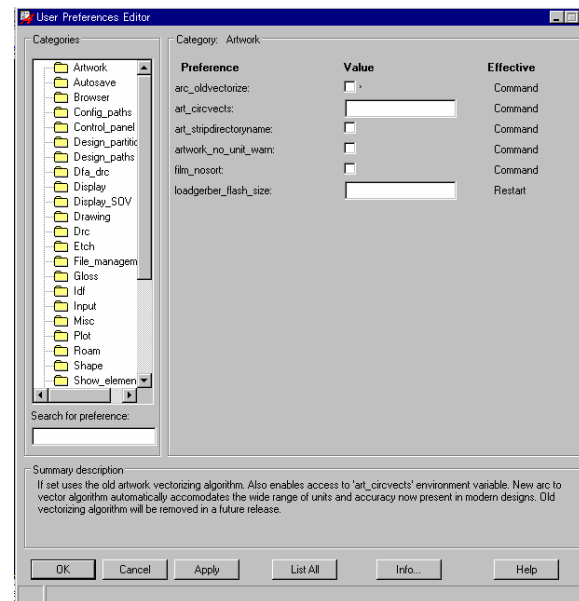
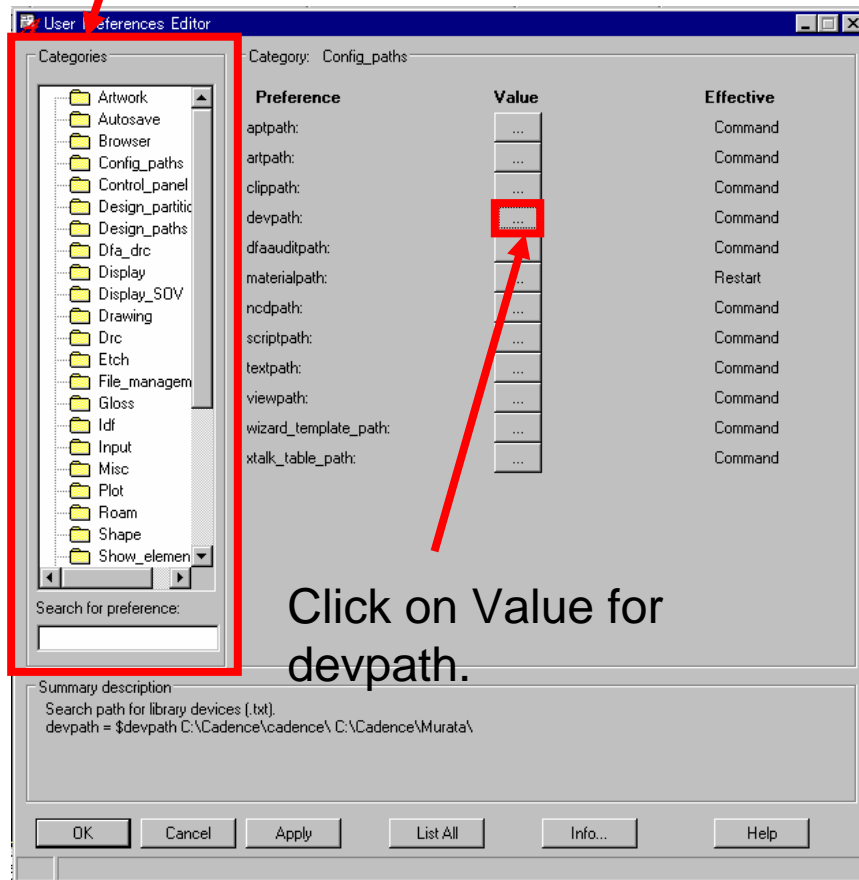


Figure 2 User Preferences Editor



Procedure for registering library 2

Select Config_paths from Categories

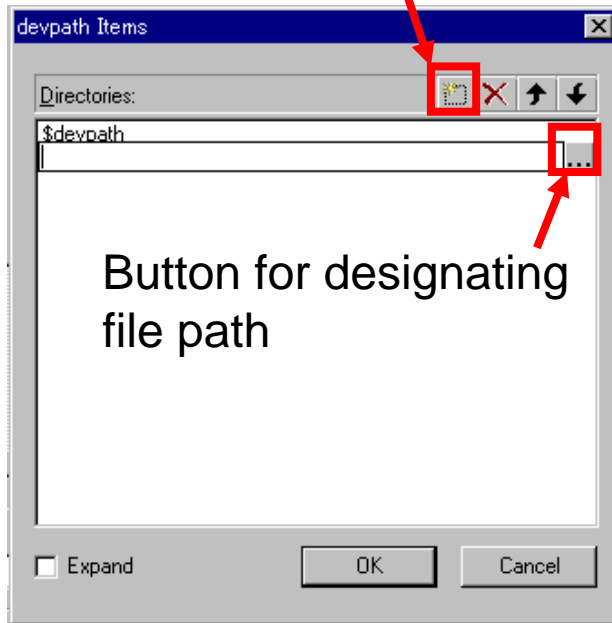


5. Select Config_paths from Categories in the User Preferences Editor.
6. Click on Value for devpath (Figure 3).
7. The devpath item window will appear.

Figure 3 User Preferences Editor

Procedure for registering library 3

New (Insert) button



Button for designating
file path

Figure 4 Devpath Items

8. Click on the 'New' button in the devpath Items window (Figure 4).
9. The button for designating the file path will appear; click it.

10. The file selection window will appear. Select the directory that was located in procedure 1, and click OK (Figure 5).



Figure 5 File selection window

Procedure for registering library 4

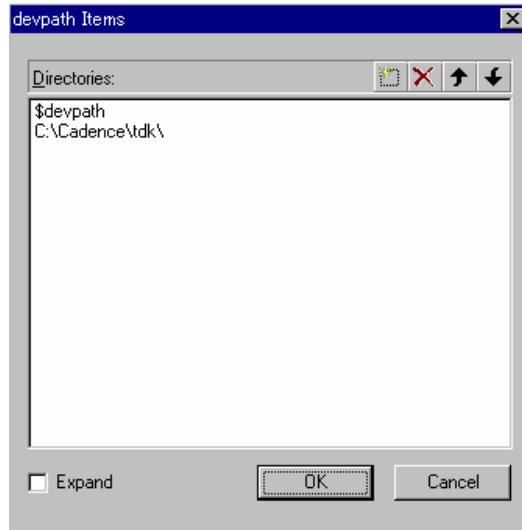
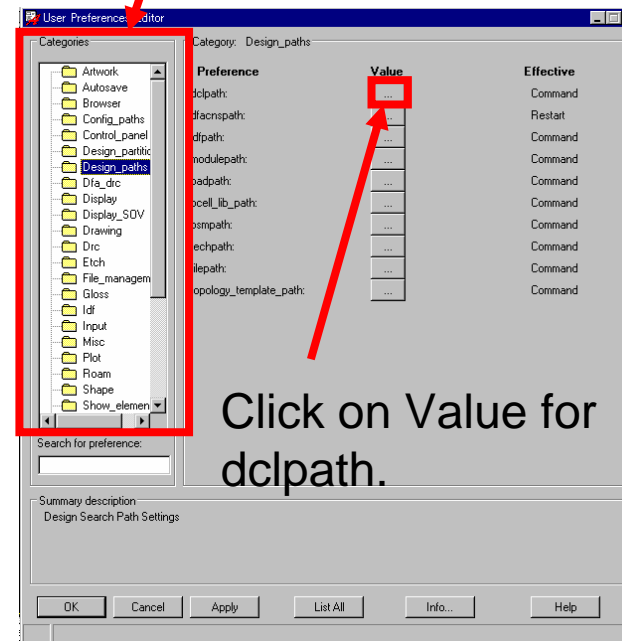


Figure 6 Devpath Items

11. The path of the selected directory will be displayed. Click on the OK button (Figure 6).

Select Design_paths from Categories



Click on Value for dclpath.

12. Select Design_paths from Categories in the User Preferences Editor (Figure 7).

13. Click on Value for dclpath (Figure 7).

Figure 7 User Preferences Editor

Procedure for registering library 5

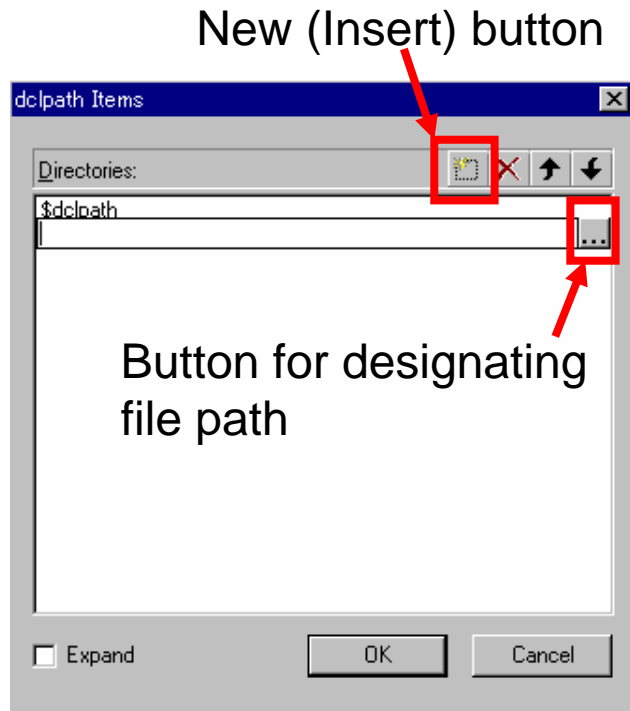


Figure 8 Dclpath Items

16. The file selection window will appear. Select the directory that was located in procedure 1, and click OK.

14. Click on the 'New' button in the dclpath Items window (Figure 7).

15. The button for designating the file path will appear; click it.

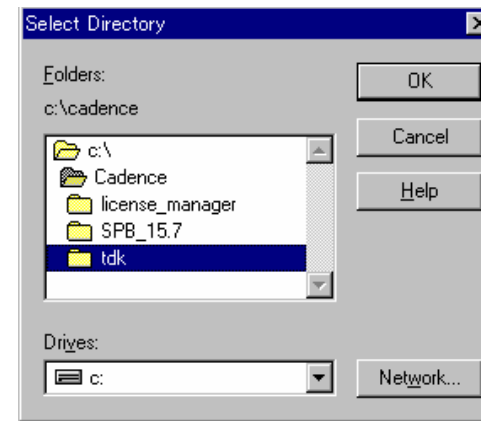


Figure 9 File selection window

Procedure for registering library 6

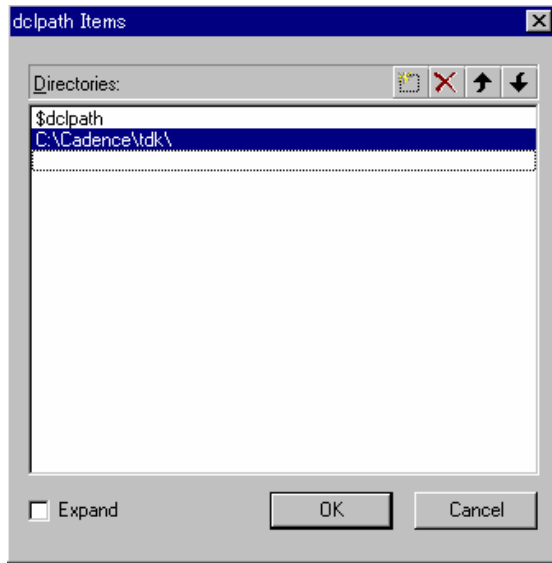


Figure 10 Dclpath Items

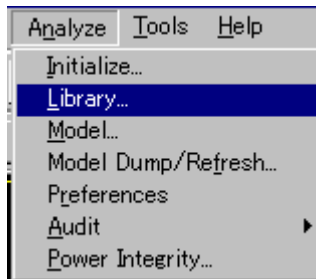


Figure 11 Analyze-Library

17. The path of the selected directory will be displayed. Click on the OK button.

18. The screen will return to the User Preferences Editor. Click the OK button to close the User Preferences Editor.

19. Select Analyze-Library from the main menu.



Procedure for registering library 7

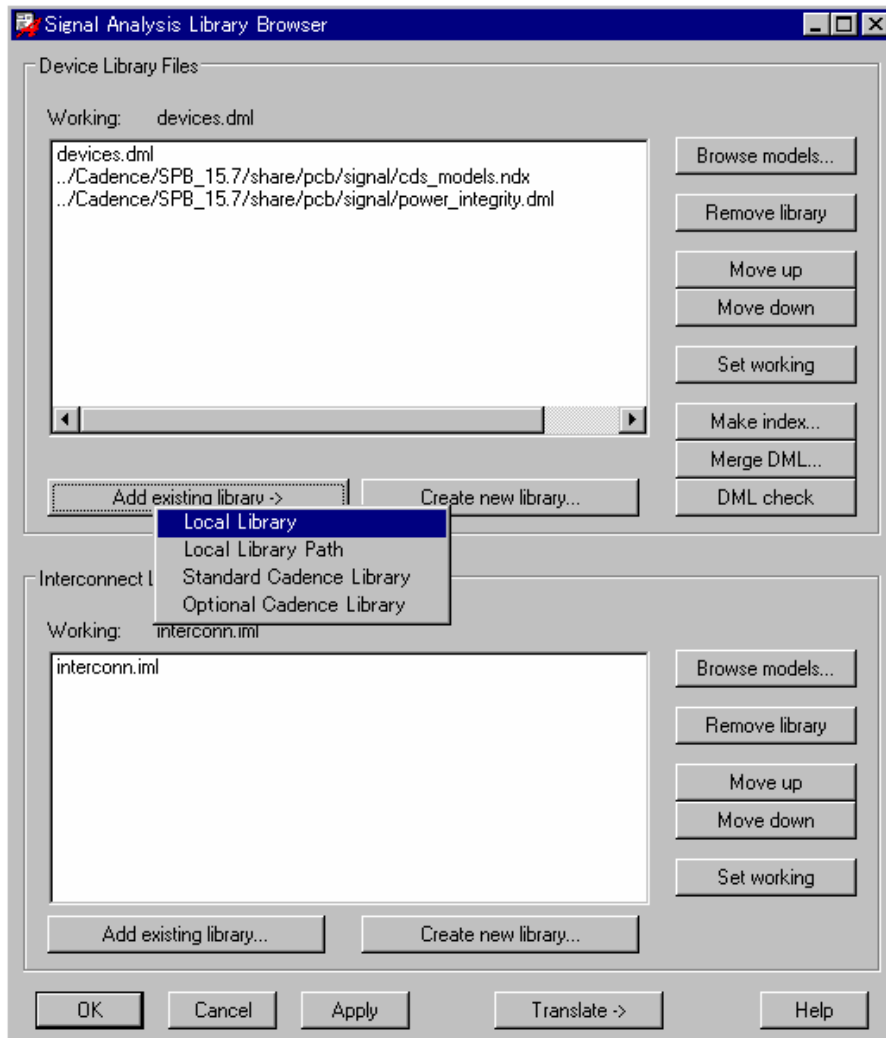


Figure 12 Signal Analysis Library Browser

20. The Signal Analysis Library Browser will be activated. Click on the 'Add existing library' button to execute a Local Library.

21. Select "tdk_capacitors.dml" in the 'tdk' directory located in procedure 1, and click OK.

22. Click on the OK button in the Signal Analysis Library Browser to complete registration of the TDK library.



About the registered equivalent models

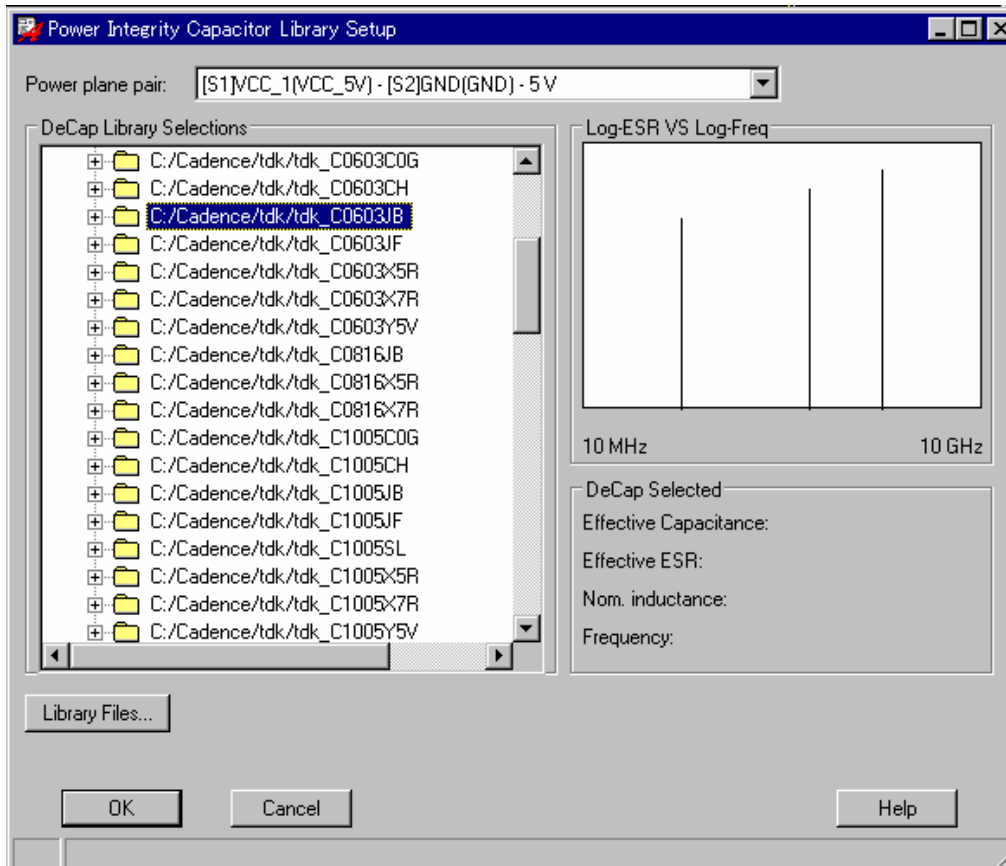


Figure 13 Power Integrity Capacitor Library

The registered equivalent models of capacitors are classified by size and temperature characteristics. Specify the type of capacitor to be used.

Refer to the product list for details.

